



The Delta Kappa Gamma Society International
Chi State Area V
Delta Lambda Chapter
deltalambdachapter.weebly.com

Rose Report

The Delta Kappa Gamma Society International promotes professional and personal growth of women educators and excellence in education.

June - July 2015

Editors: Ellen Maupin & Ann Ostenso

Leading women educators impacting education worldwide.

T.H.A.T. Report

In response to Chi State's request, our Delta Lambda Chapter's THAT Committee has set up a program for retired DKG members to keep in touch with our working DKG members.

THANK YOU to:

Sally Eastham, Ellen Maupin, Gloria Souza, Claudia Coury, Bonnie Yoshinobu, Nancy Durein, Carole Johnson, Diane Butler, Suzanne Siegelman, Cindy Cardinale, Bette Hinton and Sherry Pettit

For: volunteering as sponsors for our working teachers/members.

We are searching for **five (5)** more sponsors. **What are a sponsor's responsibilities?**

1. To deliver a \$50 check from DKG to the working DKG teacher/member at their school this August.

2. To make a first of the month telephone call.

Please email Diane Butler (dbtrim27@gmail.com) in June if you wish to be a sponsor for a working Delta Lambda member.

Thank you.

Diane Butler and Suzanne Siegelman

President's Message for Summer

CHI STATE CONVENTION in May focused: on supporting all members, on making members feel valued, and on retaining and attracting an active, involved and vital membership.

With those excellent points in mind, the Board has outlined some PLANS:

1. Supporting our Working Members through our T.H.A.T. program. *See the specifics in the T.H.A.T. Report to the left.
2. Supporting Retired Members by helping them get to meetings – rides, other support ideas.
3. Providing interesting Programs for our membership.
4. Honoring working members present at meetings with a \$25 check drawing.
5. Honoring all members who wear DKG jewelry (pins) to meetings with a prize drawing.
6. Continuing the other ways we honor our members.
7. Including a "Personals" section in the Rose Report.
8. Encouraging working members to identify and recommend potential new members from their schools or district who will be active and vital members as time allows.

We will launch our new year on **September 12th at the Markham Ranch Clubhouse**, and the **New Teacher Breakfast/Orientation on July 29th**.

Happy Summer!

Gail Boger

Meet Delta Lambda's Leaders

Alice Stoll

I'm a Native Californian. I was born in Santa Cruz.

After WWII when my father went back into teaching, we moved to Monterey where I lived, except for a brief time in Pacific Grove.

While living in the same house, I attended Larkin, Del Monte, La Mesa, Fremont (Colton session), Colton, Monterey High, and M.P.C.

During summer vacation we often went camping and hiking, sometimes going on the road for four to six weeks. We visited many National Parks in the western U.S. and Canada. Perhaps that is when I started enjoying going to new places and revisiting old.

After I graduated from Chico State, I taught for three years in California and then taught for a total of eight years in Germany (Erlangen and Worms) and Okinawa.

When I returned to California, I started working on my library-media specialist credential and subbing. In 1978 I started as a school librarian in MPUSD I earned my MLS degree, but eventually returned to the classroom, teaching first, second, and third grades.

I joined Delta Lambda in 2003 and retired in 2005.

Now I enjoy helping out with RIF, traveling, quilting, hiking/walking, taking pictures and reading.

Leslie Ann Geyer Awarded for Outstanding Community Service



The United Way of Monterey County announced the Community Service Award Nominees & Winners! More than 250 people came together at the Monterey Hotel Plaza and Spa to celebrate volunteerism at the United Way Volunteer Center Community Service Awards April 23. It was a festive evening filled with inspirational stories of the positive impact a dedicated volunteer can make. In all, more than 100 volunteers from various non profits were honored.

The 2015 United Way of Monterey County Community Service Awards Outstanding Volunteer for a **Lifetime of Service Award** went to **Leslie Ann Geyer**, Corresponding Secretary of Delta Lambda Chapter, DKG.

Chi State Convention

COMMUNICATE, COLLABORATE, CELEBRATE

The 2015 Chi State Convention was outstanding. Over 500 DKG sisters were treated to terrific and thought provoking presenters. John Lofin captured his audience with “You Matter”... just a few ways we make a positive impact of the lives of others. Sarah Sladek spoke to retaining and engaging members, especially younger members...”The Future of DKG”. Our International President, Dr. Lyn Babb Schmid continued the theme of looking to the future and adapting to changes in our Society. We were entertained with an amazing program by Lincoln High School Chamber Chorale, Estetica, and VocalEase. They took us back to the medieval times with singing, acting, and costumes as they performed around the room. Fantastic!

Heidi Chadwick was presented the Service to Chi State Award. She has been a familiar face and constant supporter of our Area V events. She is an inspiration to all of us.

Our new Chi State officers were installed for 2015-17. Janis Barr is now our new leader!

TIME to CELEBRATE

Convention Awards: 2015

Delta Lambda: Five Star Chapter for Five Plus Years & Order of the Rose

Chapter Service Awards for Delta Lambda: Service to Chapter - Corrine Long, Mary Marchi, Service to Profession - Susanne Siegelman, Service to Public - Marilyn Higbie

Area V Service Awards: Service to Area - Anita McKean-Iota Tau, Service to Profession - Karen Crummey-Delta Lambda, Public Service - Linda Smith-Zeta

Chi State Announcements:

Kathy Morgan has been appointed to serve on the Membership Committee for the Chi State Leadership Team.

Anita McKean, our outgoing Area V Director, will be a member of the Leadership Development Committee.

Karen Crummey will be the new Area V Director.

Congratulations to Karen Crummey, our new Area V Director.



Mary Marchi performs the Celebration of Life Ceremony.



Mary Marchi, Kristin Searle, Kathy Morgan, Karen Crummey, and Mickey Miyamoto at Chi State.

Reading Is Fundamental

Be Book Smart Campaign/RIF/Macy's



These RIF coordinators are planning the Macy's **Be Book Smart** Campaign at Del Monte Center on June 21-July 12th. All DKG members are encouraged to purchase a \$3.00 coupon. Each coupon saves you \$10.00 off a \$30 purchase. We receive thousands of books from the Macy's campaign each year. Members and Clifford were at Macy's on Saturday, June 27th from 12:00-4:00 p.m. We sold RIF coupons, handed out books to kids, sang songs and did face painting. We had fun. If you have any questions please call: Norma Voth 372-2607 or Barbara Sovereign 646-1912.



The RIF Coordinators, in a little dramatic performance, written and directed by Donna Bessant, entertained everyone at the End of the Year meeting. You too can have this much fun by volunteering to read at one of the schools listed below.



Coordinators 2014-2015 RIF

Please contact a coordinator if you would like to read for RIF.

Highland School
Camille Liscinsky 643-9331
Nancy Durein 373-0564

Del Rey Woods School
Alice Stoll 659-3273
Mickey Tachibana 333-0226

Martin Luther King School
Pat Gotch 375-986
Patty Cox, 250-7589
Wendy Banks, 624-0317

Marina Vista School
Ginny Hall 375-0315
Betty Ann Campbell 375 0953

Ord Terrace School
Donna Bessant 625-7714
Norma Voth 372-2607

Crumpton School
Kathy Knight 649-3582
Bonnie Yoshinobu 384-2039



Bonnie Yoshinobu poses with the librarian, Judy Kuwatani, and also with fellow Coordinator, Kathy Knight, at Crumpton. They were joined by volunteers: Frances Richardson, Marsha Leadingham, Carolyn Palmer, Lynn Parsons, and Sally Eastham in May

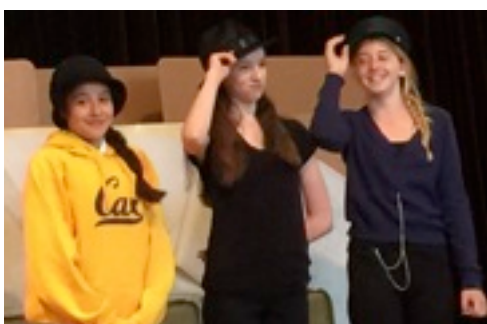
June End-of-Year Meeting and Luncheon



The End of the Year June meeting committee provided a delicious salad luncheon. From left to right: Kathy Knight, Corinne Long, Marilyn Whitcomb, Betty Aynaga, Betty Ann Campbell, Linda Brandewie, Judy Therrien, Shelia Deis, Ann Ostenson, Nancy Henderson, Chair Ginny Hall and not pictured, Kerry Connor



Two of our new members, Patricia Cox and Vickie Davidson were initiated by our President, Gail Boger, and Membership chairs, Gayle Paul and Suzanne Seigleman. Not pictured is Alice Bowhay who will be initiated at the first Board Meeting in August.



Delta Lambda members were treated to a very special performance at the End of the Year meeting. Gabriella Gallo-Rodriguez, Tara Smith and Gabriella Flanders from Los Arboles Middle School in Marina have worked together for three years on dramatic presentations for History Day. This year they were the co-champions of National History Day California in the group performance junior division. Their play, "From Tiny Bungalows to Enchanted Castles: Julia Morgan, a

Leader for Woman in the Workplace and a Legacy of Amazing Architecture" was a joint effort from the original script to the 18 page bibliography. These girls were supported by their teacher, Teri Flanders, and by Lucille Standifer, a retired Los Arboles teacher, still enthusiastic about history and middle school students. We wish them a great trip to Washington D.C.



June/July August/September Birthdays

Helen Brogno	6/13
Kerry Connor	6/14
Kate Wood	6/14
Katie Kelley	6/19
Donna Bessant	6/22
Bonnie Yoshinobu	6/25
Susan Jackson-Hewitt	6/28
Adrienne Jensen	6/29
Gayle Paul	6/29
Kathy Caves	7/1
Mickey Tachibana	7/4
Bonnie van Meter	7/4
Carolyn Palmer	7/12
Sally Eastham	7/13
Michele Hoover	7/24
Barbara Hill	7/27
Sherry Pettitt	8/2
Rena DiGirolamo	8/3
Charlene Lowery	8/5
Leslie Geyer	8/8
Linda Alderman	8/14
Maureen Baroni-Boogay	8/17
Lynn Galvan	8/19
Tina Glenn	8/21
Cynthia Cardinale	8/27
Sally Shafer-Harr	8/27
Kathryn Knauf	8/29
Marilyn Higbie	9/5
Betty Anaga	9/12
Phil Smith	9/12
Gail Boger	9/15
Ann Ostenso	9/21
Wendy Milligan	9/27

Delta Lambda Supports Literacy and Educators

This year we proudly gave \$1500 to RIF, \$720 to Girls Inc., \$500 to Mary Marchi Fund, \$100 each of the following: World Fellowship, Chi State Emergency Fund, International Emergency Fund, And LIFE. In addition we handed out \$2000 in non-member grants-in-aid. We also had seven memorial gifts to LIFE.

DKG Dues Are Due

Dues are due to Marilyn Higbie by September 1, 2015. Please make checks out to Delta Lambda for \$100. After September 1 dues are \$105. Checks may be post dated and mailed now.

My address is 874 Gibson Avenue
Pacific Grove, CA 93950.

Thank you very much!!! Marilyn

Delta Lambda 2014 - 2016 Board

Gail Boger - President
 Kristin Searle and Linda Foy - Past Presidents
 Kathy Caves and Bonnie Yoshinobu - 1st VPs, Program
 Gayle Paul and Susan Siegleman - 2nd VPs, Membership
 Marilyn Higbie - Treasurer
 Bette Hinton - Assistant Treasurer
 Nancy Henderson - Recording Secretary
 Leslie Geyer - Corresponding Secretary
 Dorothy Becker - Parliamentarian
 Marsha Leadingham - Member-At-Large
 Ellen Maupin and Ann Ostenso - Rose Report
 Marsha Leadingham & Stephenie Meroney- RIF
 Christine Warde & Diane Butler - President's Ad Hoc
 Committee

Member News

We offer sympathy to Kathy Morgan and family on the death of her mother-in-law, Audrey M.Morgan, in May.

If you have an item for "Member News", please email:
 Ellen Maupin, ellenmaupin@yahoo.com or Ann Ostenso, mulberry9@comcast.net

Sign Up for a Delta Lambda Program

Dear DKG sisters,

There are a number of folks who have not signed up for a program committee. Please know that you are needed!! To be successful in presenting these programs, we do need committee support. You can contact me (bonyoshinobu@gmail.com) or Kathy Caves (ctcaves@sbcglobal.net).

Much thanks for your willingness to serve.
Bonnie Yoshinobu

Wednesday, July 29, 8 a.m. - New Teacher Breakfast and Orientation

Saturday, Sept. 12, 10:30 a.m. - "Kick off" Meeting

Friday, Oct. 16, 6 p.m. - Bunco Fundraiser

Saturday, Nov. 7, - Pt. Pinos Lighthouse Tour & lunch

Saturday, Dec. 5, 10:30 a.m. - Holiday Meeting

Thursday, Mar. 3, 5:30 - Voting Meeting

Saturday, April 9, 1:30 - Explore the World of Travel

Saturday, June 4, 10:30 - End of Year Meeting and Lunch

New RIF Coordinators Yes, it is finally happening. After more than a decade of Barbara Sovereign and Norma Voth as the RIF Coordinators, the leadership is being handed over to Marsha Leadingham and Stephenie Meroney. These two have already been involved with RIF in many ways – from ordering books, coordinating the RIF programs at schools, to being active participants in RIF Days. It will be a smooth transition, and RIF will be in very good hands.

During the last ten plus years, RIF has gone through many changes with the National RIF losing its funding, the addition of the Macy's Share program, coordinators at each of the six schools, incredible support from our own Delta Lambda Chapter Members, and financial support from many local organizations.

We look forward to remaining actively involved with RIF. It truly is a joy to see the students' faces as they are read to and then see them pick out a book that will be theirs forever.

Thank you for all the support you have given to us, and we hope that you will share that same enthusiasm with Marsha and Stephenie.



Norma Voth and Barbara Sovereign pass the baton to Stephenie Meroney and Marsha Leadingham.

Barbara Sovereign and Norma Voth

Macy's Be Book Smart Day is a Big Success



Pat Gotch, Mickey Tachibana and Ann Ostenso sell Macy's coupons to raise money for RIF.

Clifford is joined by his good friends Norma Voth, Susan from Scholastic, and Donna Bessant.



Always a big draw, Clifford amazes a young fan.



The face painting was popular, done here by Kim Jimenez. She and her mother, Cindy Cardinale provided that fun activity.



Wendy Banks takes a turn reading to a youngster.

Norma Voth and Barbara Sovereign's last event as the chief RIF coordinators before retiring was a huge success thanks to lots of help from Delta Lambda members as well as Susan from Scholastic who provided books to give away and the ever popular Clifford costume. Members sold coupons, painted faces and read to young people and gave them books. Cathy Findley and friends provided music.

